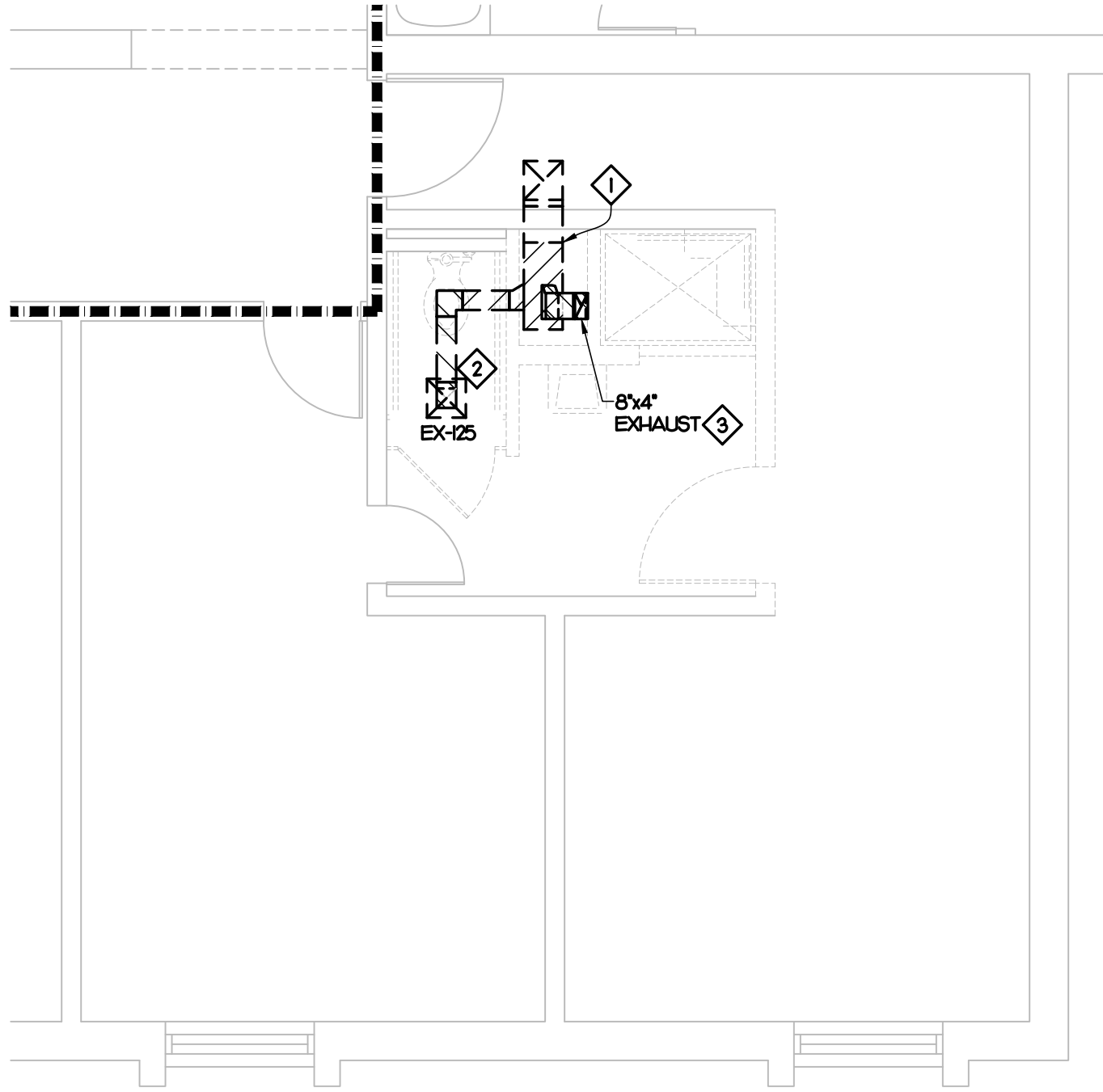


BUILDING A1 - ENLARGED HVAC DEMOLITION PLAN
SCALE: 1/4" = 1'-0"

3



BUILDING A2 - ENLARGED HVAC DEMOLITION PLAN
SCALE: 1/4" = 1'-0"

1

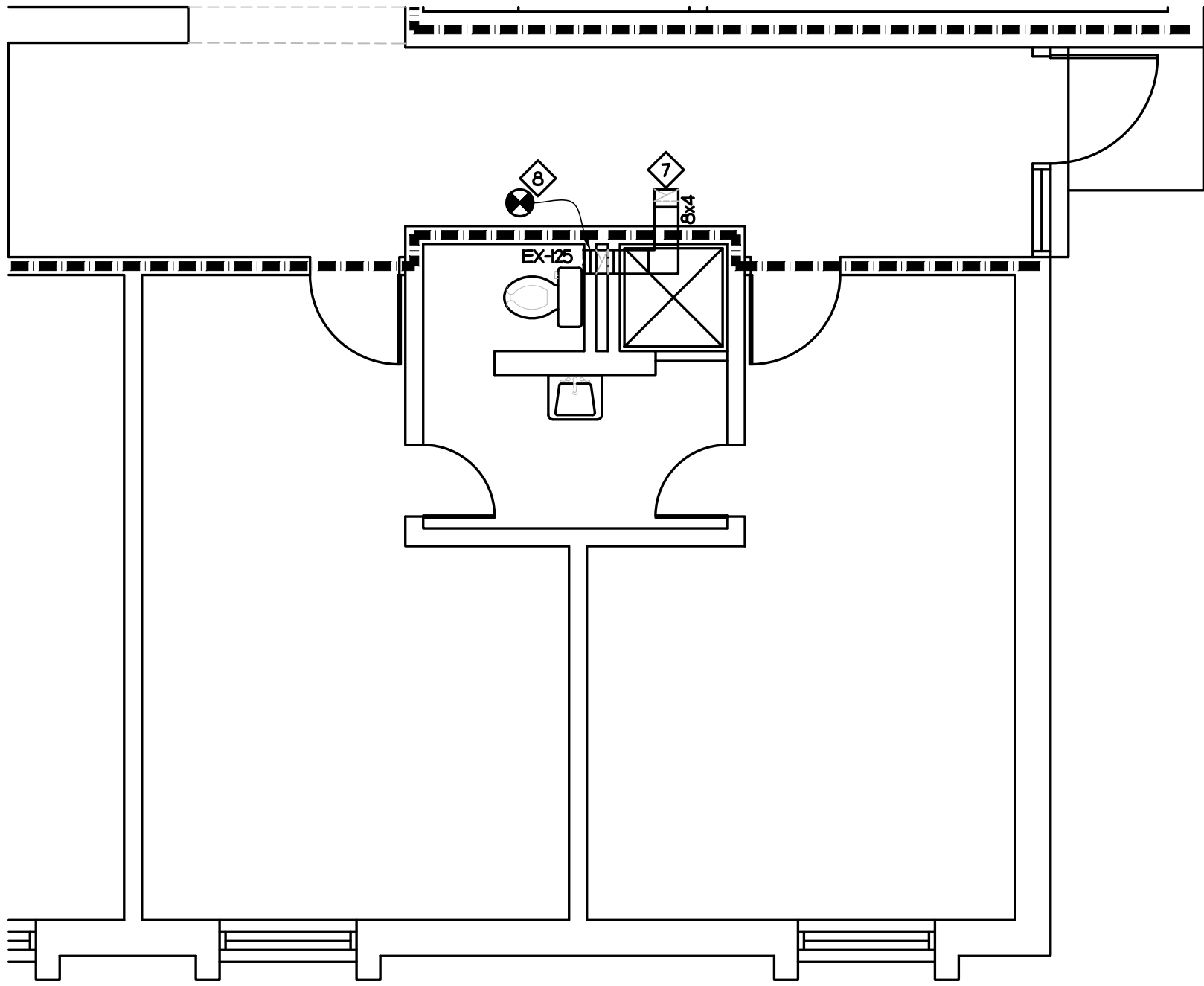
HVAC KEY NOTES

- 1 REMOVE DUCTWORK TO POINT INDICATED.
- 2 REMOVE RESTROOM EXHAUST GRILLE AND ASSOCIATED DUCTWORK
- 3 REMOVE EXHAUST DUCTWORK FROM FIRST FLOOR RESTROOM
- 4 EXISTING SIDE WALL EXHAUST GRILLE TO REMAIN. REMOVE EXISTING ASSOCIATED DUCTWORK.
- 5 CONNECT TO EXISTING EXHAUST DUCT.
- 6 DUCT UP FROM FLOOR BELOW.
- 7 OFFSET EXHAUST DUCT ABOVE CEILING AND ROUTE UP TO WALL CHASE IN FLOOR ABOVE.
- 8 CONNECT NEW DUCT TO EXISTING SIDE WALL EXHAUST GRILLE. FIELD VERIFY EXACT LOCATION.

RATED WALL LEGEND

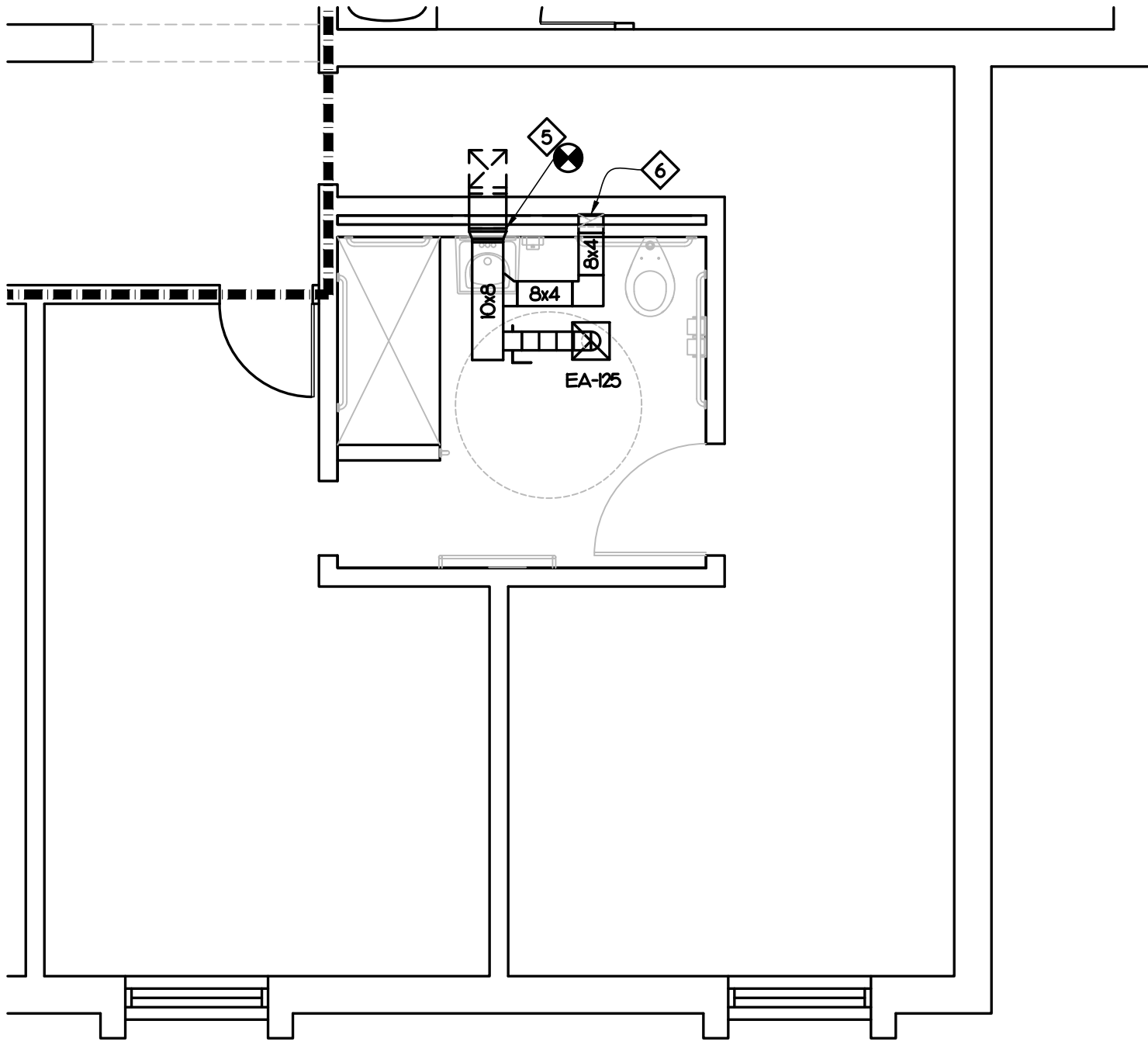
1 HOUR FIRE WALL

NOTE:
- ALL WORK SHOWN ON THIS SHEET TO BE ALTERNATE M-I
- ALL WORK THIS SHEET TO HAVE A TAB REPORT PERFORMED BEFORE AND AFTER WORK.



BUILDING A1 - ENLARGED HVAC RENOVATION PLAN
SCALE: 1/4" = 1'-0"

4



BUILDING A2 - ENLARGED HVAC RENOVATION PLAN
SCALE: 1/4" = 1'-0"

2

IMEG
www.imegcorp.com
3221 BLUE RIDGE ROAD, STE 113
RALEIGH, NC 27612
P: 919.971.1111
F: 919.971.1111
North Carolina Design Registration #F-1507
PROJECT # 24048

| REVISIONS | | 5/27/25 |
|-----------|--------------|---------|
| FOR | CONSTRUCTION | |
| | | |
| | | |
| | | |

ATLANTEC
ENGINEERS, P.A.
3221 BLUE RIDGE ROAD, SUITE 113
RALEIGH, NC 27612
24048

IMEG
CONSULTANTS
CORP.
No. F-1507
SEAL
025036
ENGINEER
BRADLEY W. FLETCHER
5/27/25

PREPARED FOR:
NC DEPARTMENT
OF INSTRUCTION
SCO #
24-27792-01A

GOVERNOR MOREHEAD SCHOOL
SPRINKLER, ADA TOILET, LIGHTING
UPGRADES FOR DORMS A, B, + D
RALEIGH, NC

CONTENTS:
MECHANICAL
ENLARGED
PLANS

DATE:
May 27, 2025

DESIGNER: JAD
ENGINEER: BWF

SHEET NO.
M-201
OF --